

**Sandi Wesolowski**

---

**From:** Aaron Hertzberg <ahertzberg@franklinwi.gov>  
**Sent:** Wednesday, May 3, 2017 3:33 PM  
**To:** Jerald Bussen  
**Subject:** [Forwarded from Intradyn] [Wed Feb 24 20:18:56 2021] RE: Franklin Site  
**Attachments:** Loomis and Ryan Properties.pdf; Schematic Master Plan Area G.pdf

Here's a map. Dan's group bought all the property in blue and some property across Loomis south of Ryan. We initially talked about Strauss developing somewhere along the western edge of their property South of Loomis, but yet undefined.

I also attached a copy of a schematic masterplan for the entire area that shows a mix of uses. There remains a question about how much residential (yellow) can actually be built out there because of a high water table. Houses in Wisconsin need basements. That's not really an issue for industrial development, like yours.

Aaron

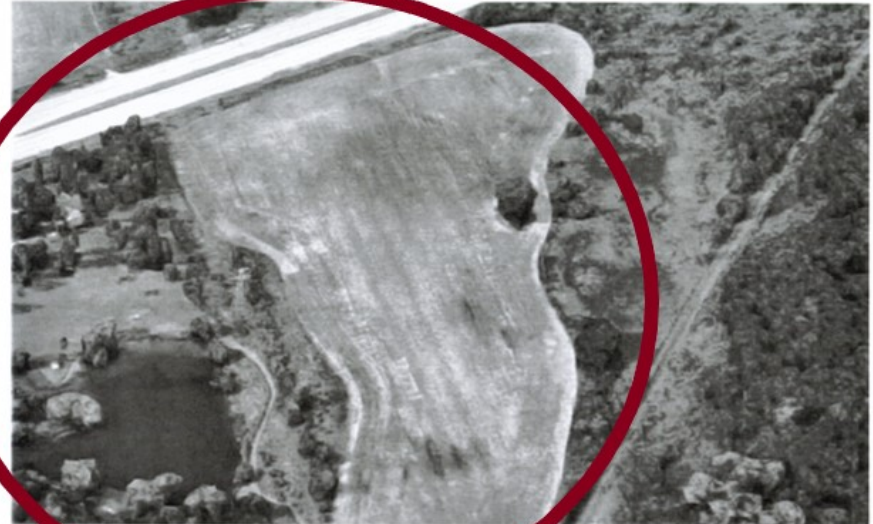
**Aaron Hertzberg**  
Director of Economic Development  
City of Franklin  
9229 W. Loomis Rd.  
Franklin, WI 53132  
Office: 414-425-4024  
Direct: 414-427-7566  
[www.franklinwi.gov](http://www.franklinwi.gov)



**From:** Jerald Bussen [mailto:JeraldB@straussbrands.com]  
**Sent:** Wednesday, May 03, 2017 2:31 PM  
**To:** Aaron Hertzberg  
**Subject:** RE: Franklin Site

Aaron,

To be clear this is the land site we are discussing? With the house in the woods, the subdivision, and other houses on Loomis, wouldn't this lead to an uproar from residents?



Thanks,

Jerry Bussen  
Strauss Brands Incorporated  
Office: 800-562-7775 x148  
Cell: 765-228-6461  
Office fax: 414-421-0098  
E Mail: [geraldb@straussbrands.com](mailto:geraldb@straussbrands.com)  
[www.straussbrands.com](http://www.straussbrands.com)  
Fan us on Facebook: <http://tinyurl.com/25uf8pb>



Ethically Raised Family Farmed Meats